



**Kang Chen Technology CO.,LTD**

(DEYI Technology Holding)

Presentation

## ★ Mile Stone

- ◆ 1. Year 2006 Kang Chen Technology was established as the holding company of Kang Chen group.
- ◆ 2. Year 2007 Kang Chen Shanghai was established
- ◆ 3. Year 2010 Kang Chen Taiwan was established
- ◆ 4. Year 2012 Kang Chen U.S.A (sales office) established
- ◆ 5. Year 2015 Kang Chen Germany (sales office) was established



## ★ Kang Chen -Tech Corporate Culture

- ◆ **Faith:** Serve the society, treat with all sincerity, connive to develop, realize oneself.
- ◆ **Mission:** On the principle that sincerity and practicality, meet customer's demand mission, make the win-win situation.
- ◆ **Entrepreneurial Spirit:** Unity, strive, responsibility, keeping forging ahead, innovation. gratitude.



## ★ Vision and Business Concept

- ◆ Our Vision

Our customers should have full confidence in Kang Chen to take care of 100% of their PCB requirements.

- ◆ Our Business Concept

With strong buying power, know-how and experience, Kang Chen can provide PCB's faster, easier, and at a lower total cost than similar alternatives.

Our target group is companies in attractive areas in the world where the PCB is a strategic product, and where Kang Chen can be a partner for product development and cost reductions by making PCB sourcing easier and more effective.





★ What does Kang Chen contribute to your business?

## Our promise

- ◆ Lower overall costs : Quality, logistic and technical support.
- ◆ On time delivery 95%
- ◆ Assured quality 99%
- ◆ A supplier for every need HDI, Rigid board, Rigid Flex board , Light Bar board and so on

## ★ Our Mission

- ◆ **Provide One-stop Out Sourcing**
- ◆ **Quality Management at Manufacturer**
- ◆ **Technology Update at Both End**
- ◆ **Logistic Management**
- ◆ **Cost Reduction Plan**
- ◆ **Professional Communication Skill**
- ◆ **Satisfaction to Both End**
- ◆ **Environmental Friendly Solutions**



## ★ Full Services Provider

- ◆ Technology
- ◆ Quality
- ◆ Response
- ◆ Delivery
- ◆ Cost

## ★ Technology

- ◆ To Provide Wide Range PCB Products (HDI, Rigid board, Rigid Flex , Light Bar board and so on)
- ◆ To Settle Engineering Queries through daily and local communication
- ◆ Sample Build for Pilot Run to Mass Production
- ◆ Product Management



## ★ Technology

	Capability Data
Product Type	Normal, HDI, Flex-Rigid, Semi-flex, Anylayer, CMOS
Maximum Layers	60L
Material	FR4, Hi-tg FR4, Halogen Free, BT, Hi Frequency (Arlon; Rogers; Taconic), Substrates.
Maximum Board thickness	8.0mm
Minimum Board thickness	0.05mm (2L) 0.2mm(4L)
Maximum Panel Size	48"*24"
Maximum Cu thickness(base)	5OZ/inner 8OZ/outlayer
Aspect Ratio	16:1
Minimum Line Width/Spacing	75um/75um
Surface Treatment	OSP, ENIG , ENEPIG, Hard Gold , Soft gold, Immersion Tin, Immersion silver , Lead free HASL.
Impedance Tolerance	+/-5%
Min.mechanical drill size	0.15mm
Minimum laser drill size	3mil (0.076mm)
Pitch limited SMT spacing	6mil (0.15mm)
Pitch limited BGA spacing	4mil (0.1mm)
Layer registration tolerance control	+/-4mil(0.1mm)
Board thickness tolerance control	+/-5%

## ★ Quality

- ◆ Source Inspection
- ◆ Coordinates Activities in Customers Qualification Survey & Follow Up
- ◆ First Article Inspection
- ◆ Outgoing Quality Inspection (AQL=0.65)
- ◆ Corrective Actions on Site Follow Up
  - Immediate action (48 hours maximum)
  - Corrective action (7 days)

## ✦ Response

- ◆ Local Marketing & Manufacturing Information Exchange
- ◆ 24 Hours Service for Any Notification at Manufacturers
- ◆ 24 Hours Quotation , Engineering & Quality Confirmation
- ◆ Regional Customers Service

## ✦ Delivery

- ◆ WIP Report every three working days
- ◆ Capacity Allocation / Negotiation
- ◆ Production Control Planning
- ◆ Logistic Support



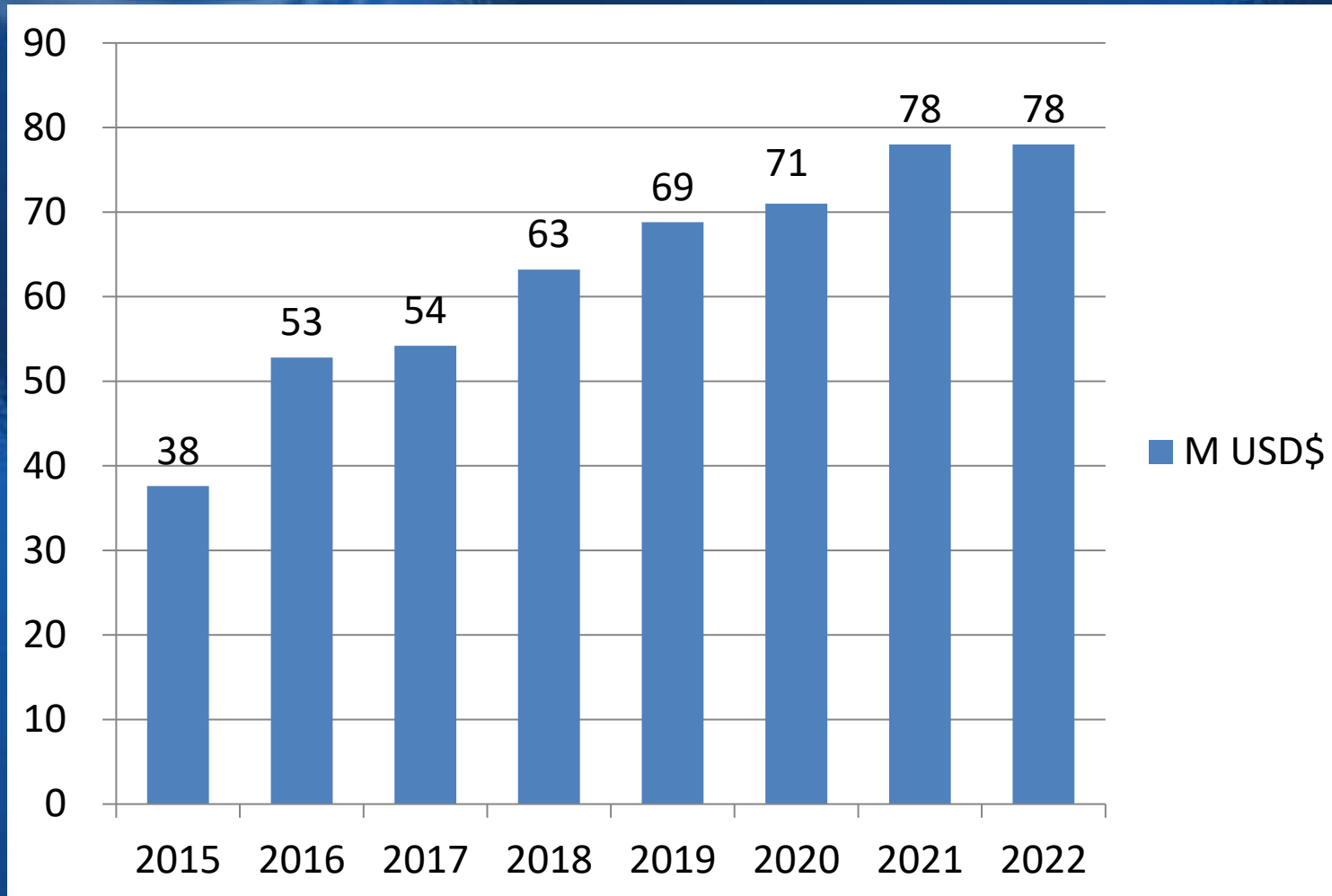
## ✦ Cost

- ◆ Cost Structure Analysis
- ◆ Competitiveness through
  - ✦ -Increasing Material Utilization
  - ✦ -Sourcing Capability
  - ✦ -Capability Allocation
  - ✦ -Volume Purchasing Rebate

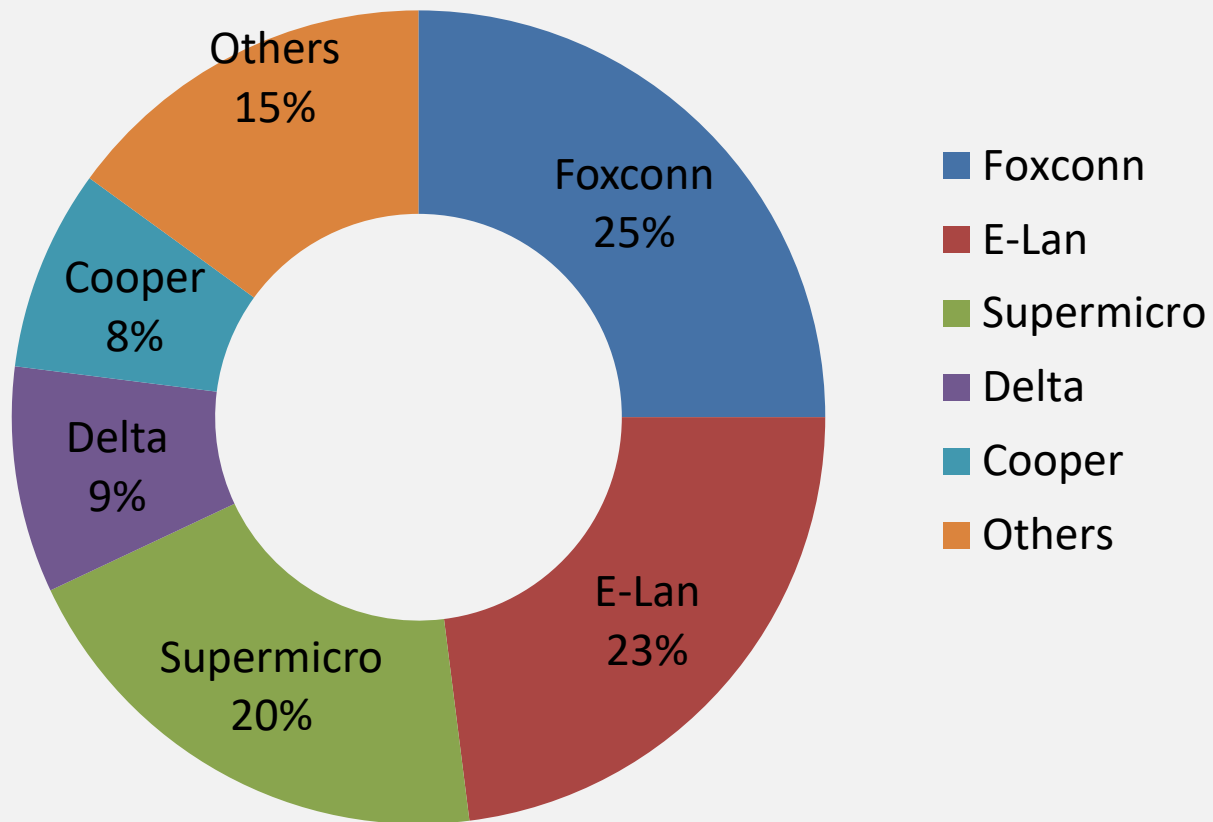
## ★ Our Customers

- ◆ Medium/small volumes
- ◆ Complex boards
- ◆ Quick turn around
- ◆ High tech
- ◆ Quick feed back, close to end customer and customer production
- ◆ Transfer support

## ★ Revenue in 2015~2022



## ★ Top 5 Reference List





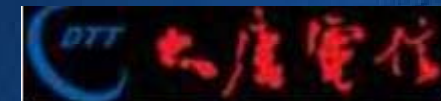


# ★Certificates

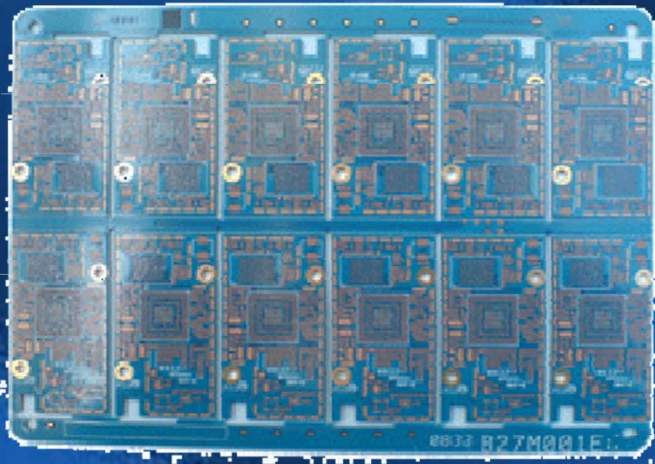




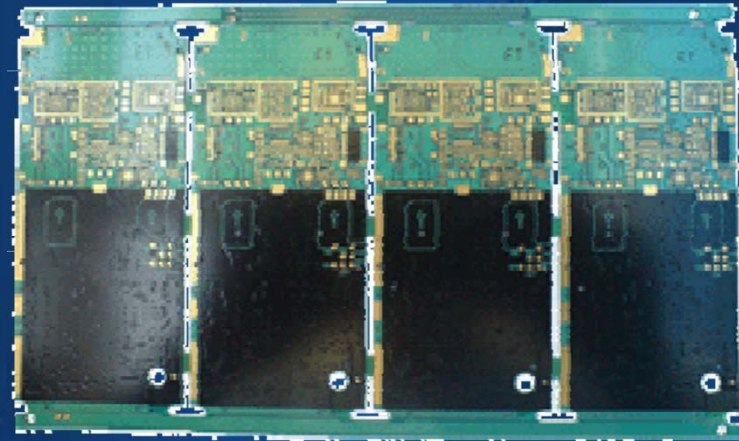
- ◆ Kang Chen -Tech Some of our customers



- ◆ Kang Chen-TECH Some of our Production



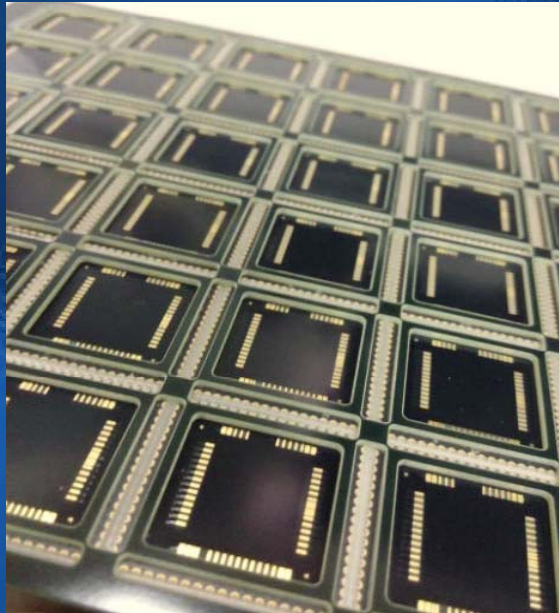
8L 2Level HDI



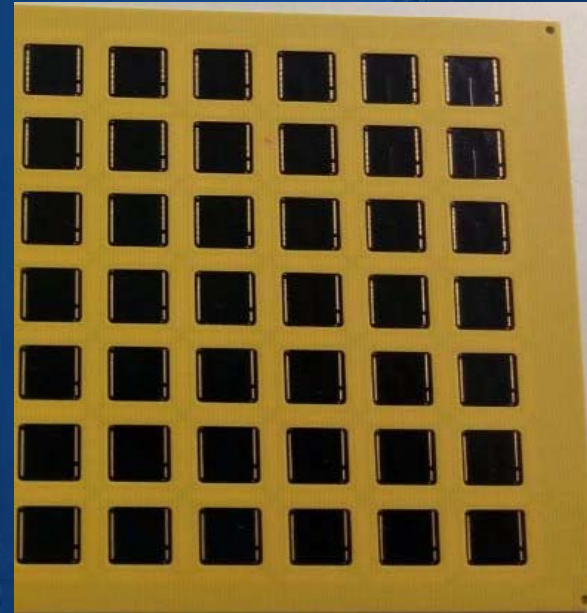
4L Black IG 4mil



- ◆ Kang Chen-TECH Some of our Production



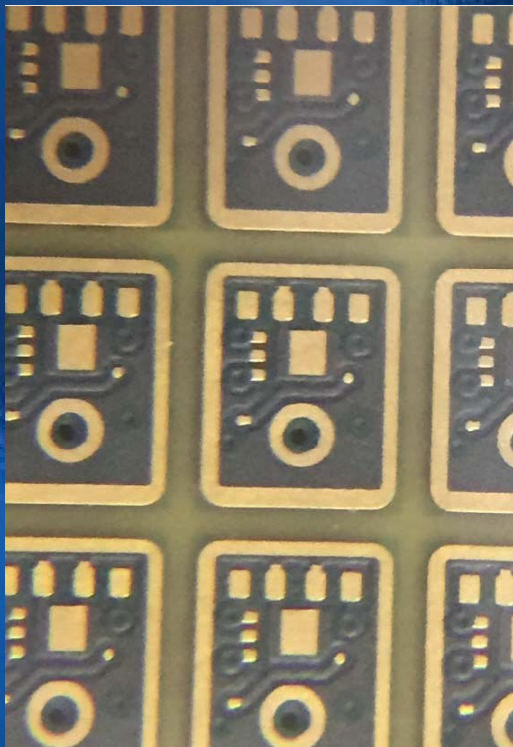
4L PLCC module



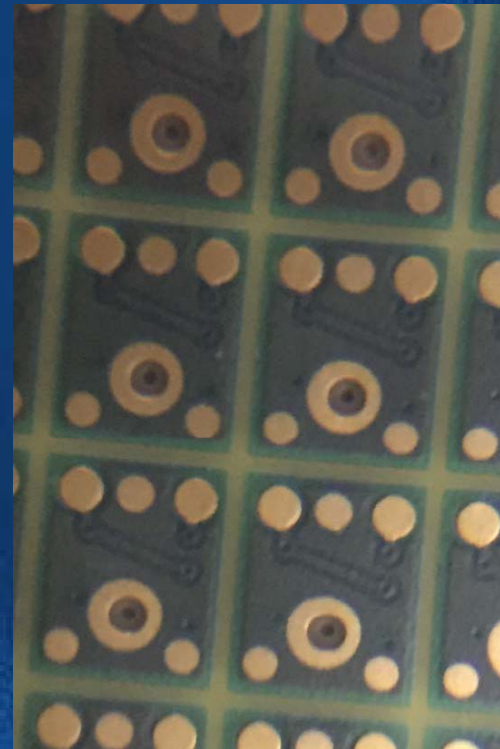
2L PLCC module



- ◆ Kang Chen-TECH Some of our Production

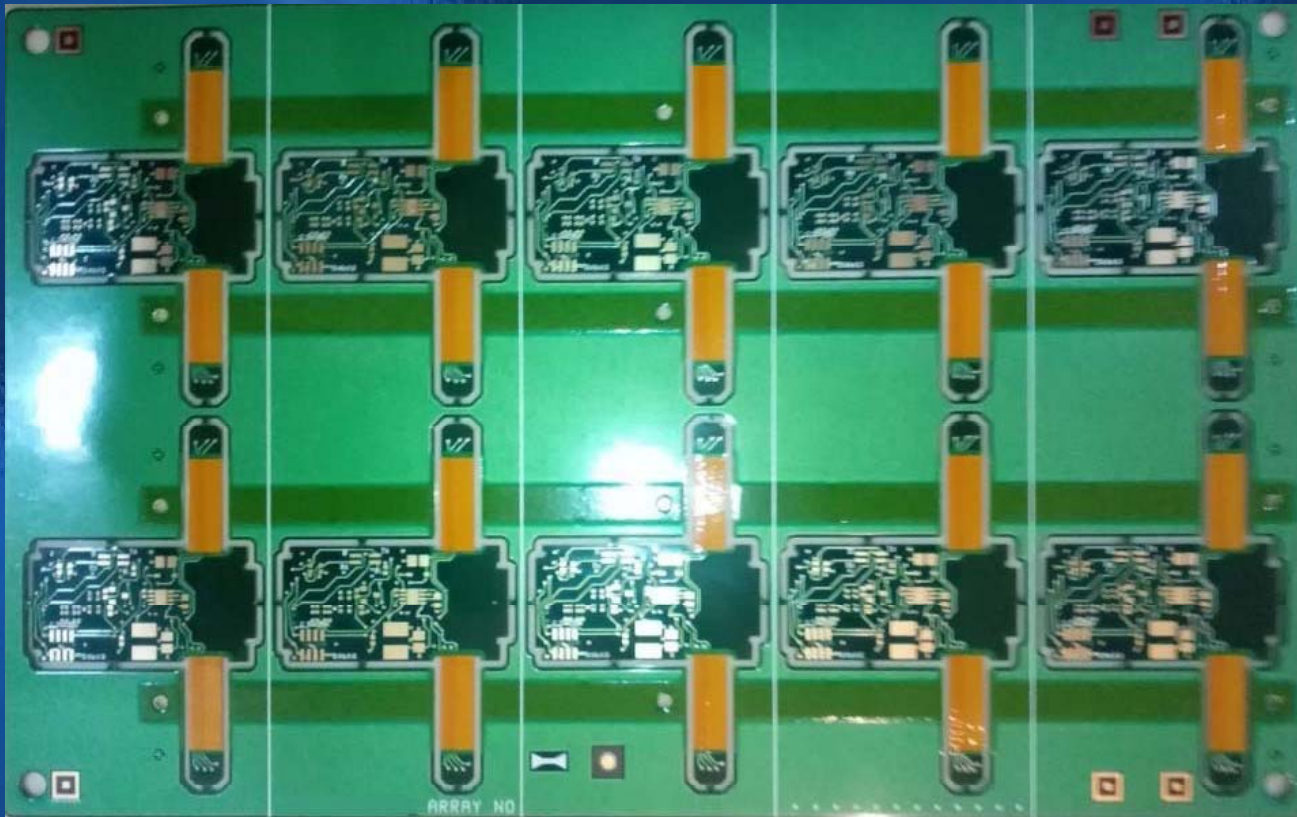


4L MEMS



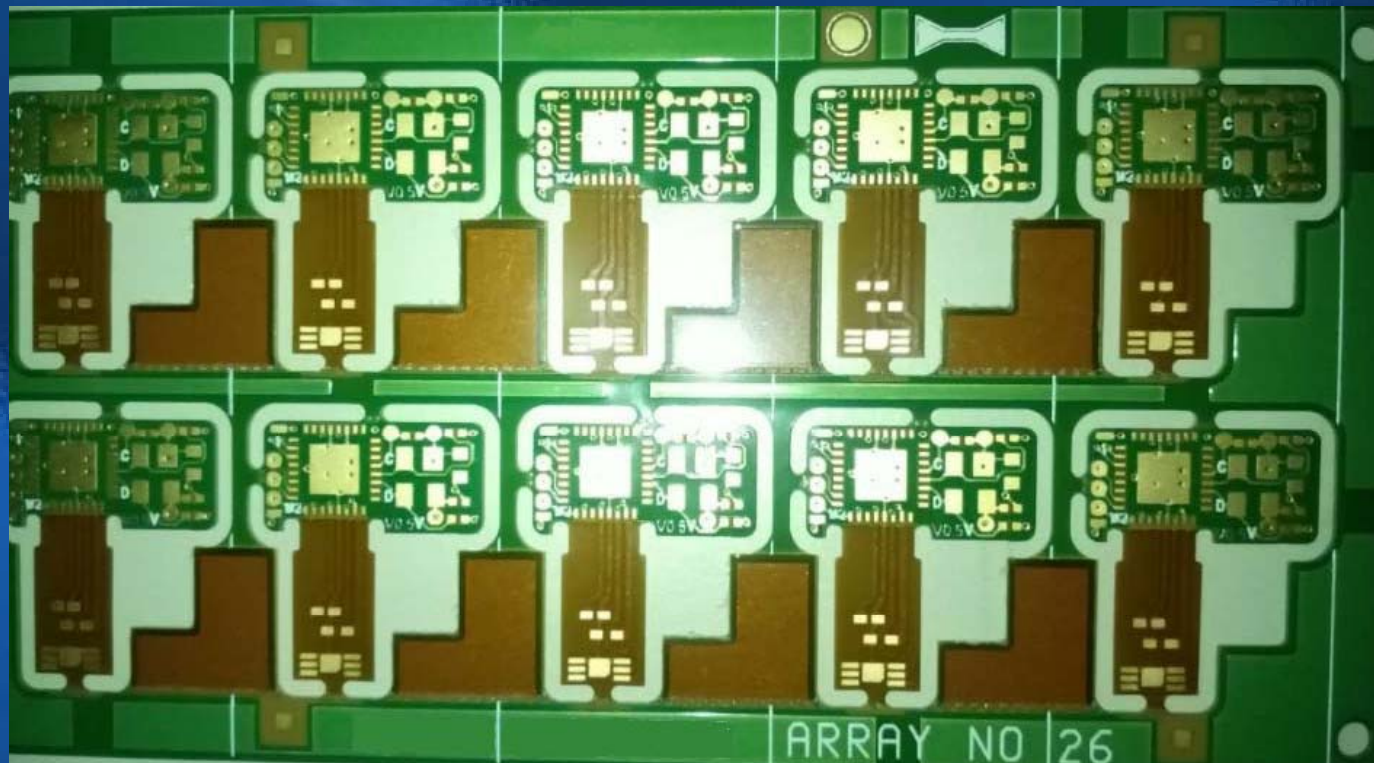
4L MEMS

- ◆ Kang Chen-TECH Some of our Production



4L Rigid + 2L Flex

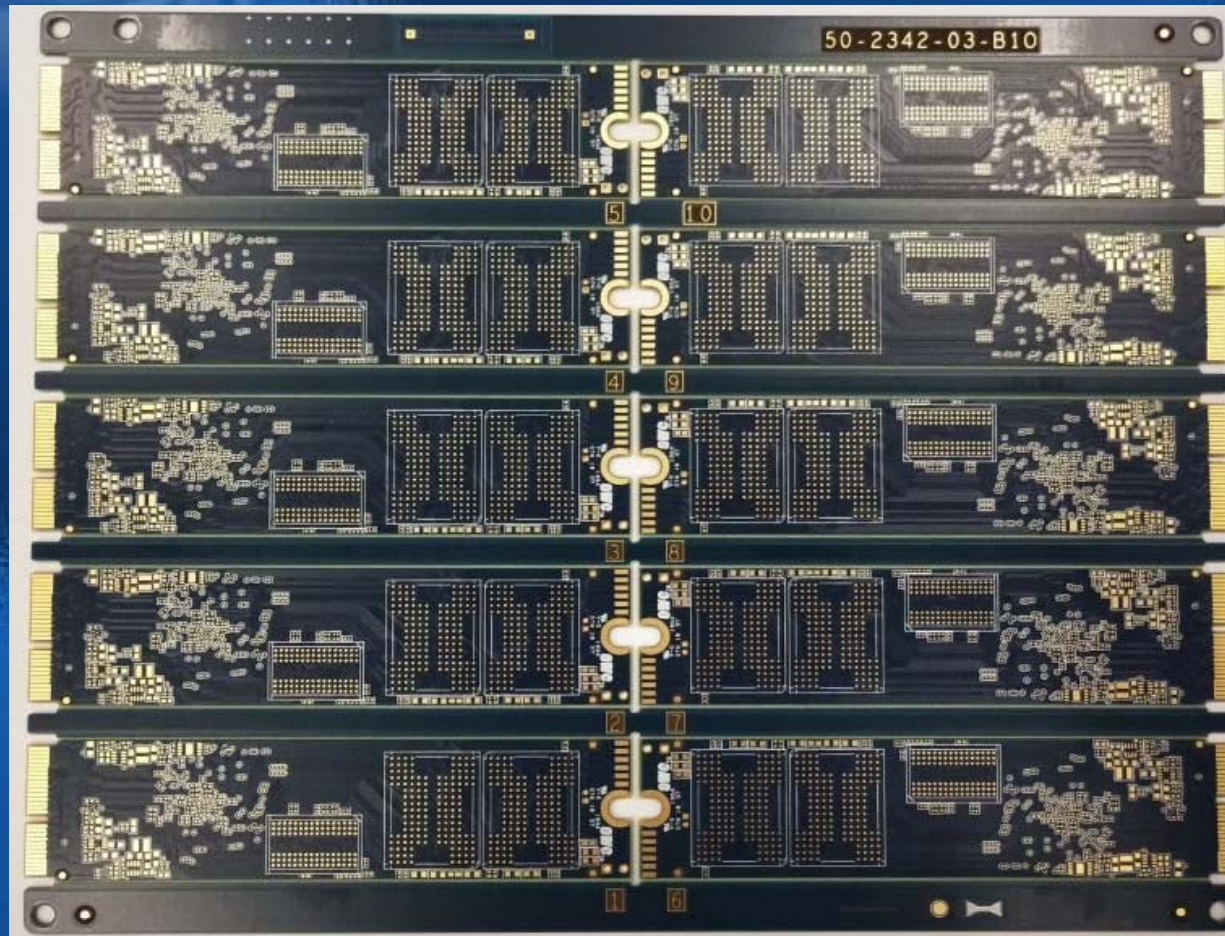
- ◆ Kang Chen-TECH Some of our Production



4L Rigid + 2L Flex



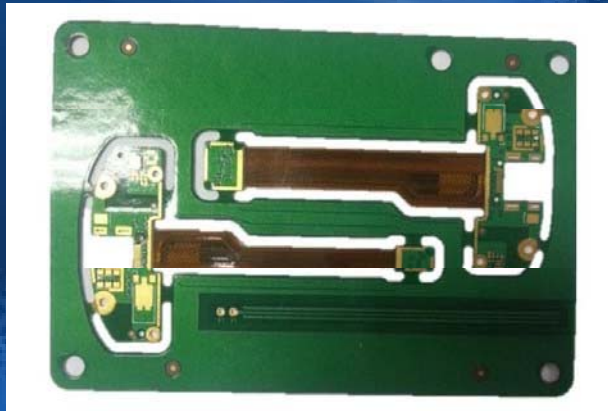
- ◆ Kang Chen-TECH Some of our Production



10L Anylayer HDI PCB



- ◆ Kang Chen-TECH Some of our Production



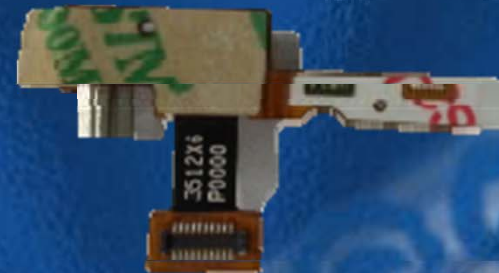
4L Rigid/Flex PCB 90ohm



6L FPC for cell phone

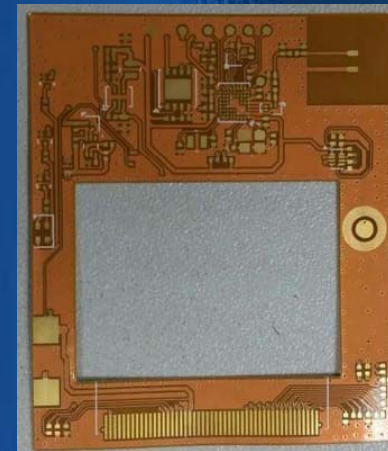
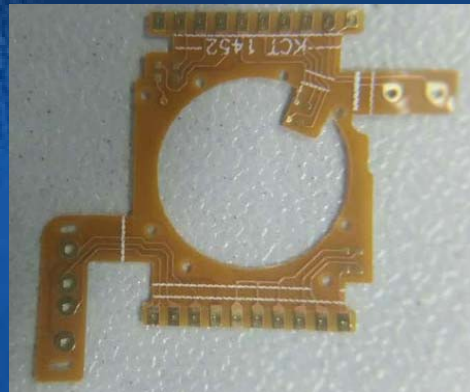


4L FPC for cell phone



4L HDI+copper fill FPC for sensor

- ◆ Kang Chen-TECH Some of our Production

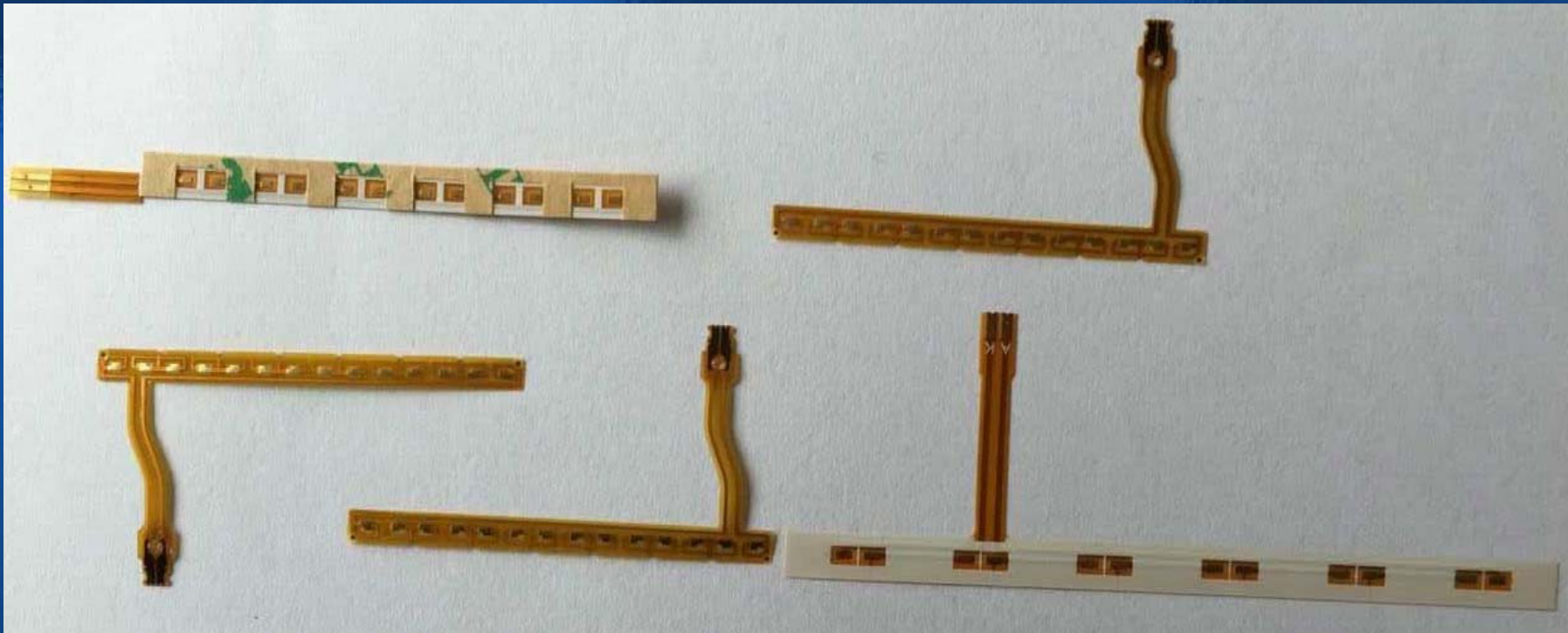


4L HDI+copper fill for USB



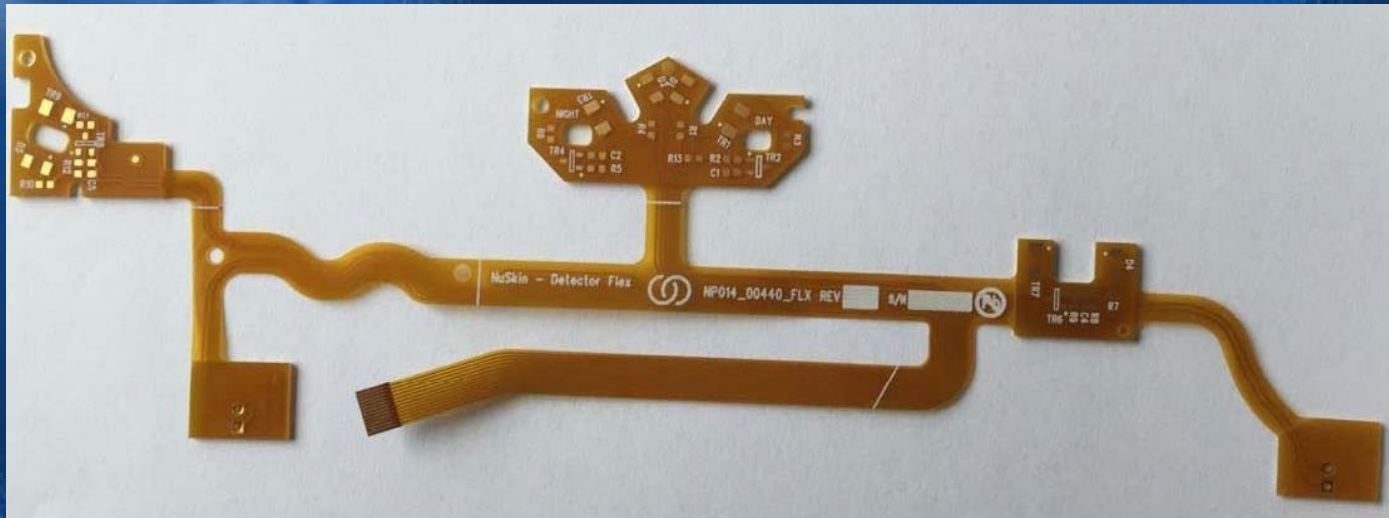
8L HDI FPC

- ◆ Kang Chen-TECH Some of our Production



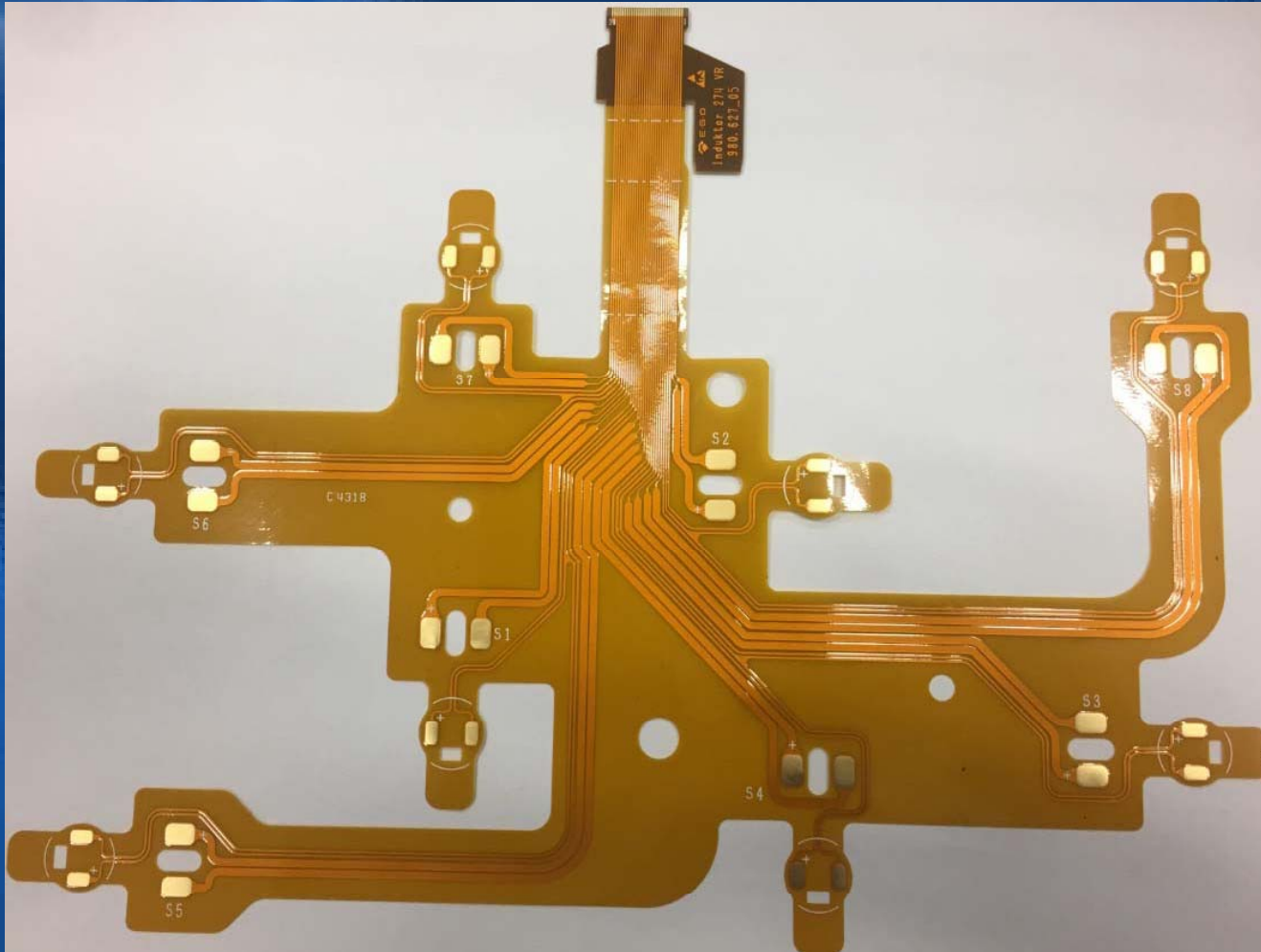


- ◆ Kang Chen-TECH Some of our Production



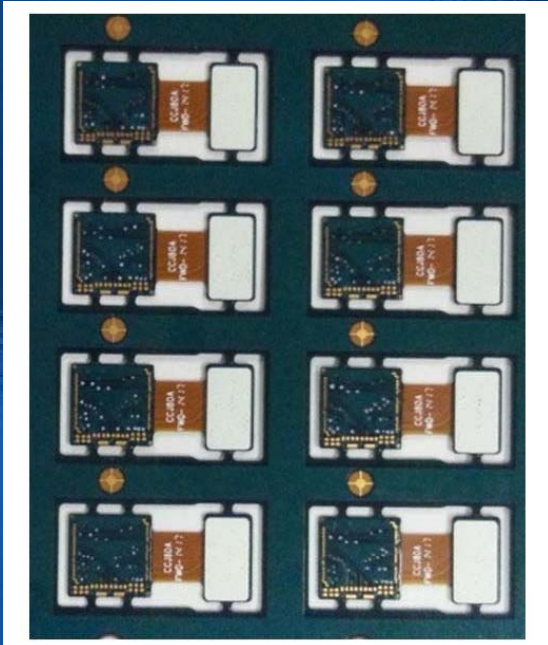


- ◆ Kang Chen-TECH Some of our Production

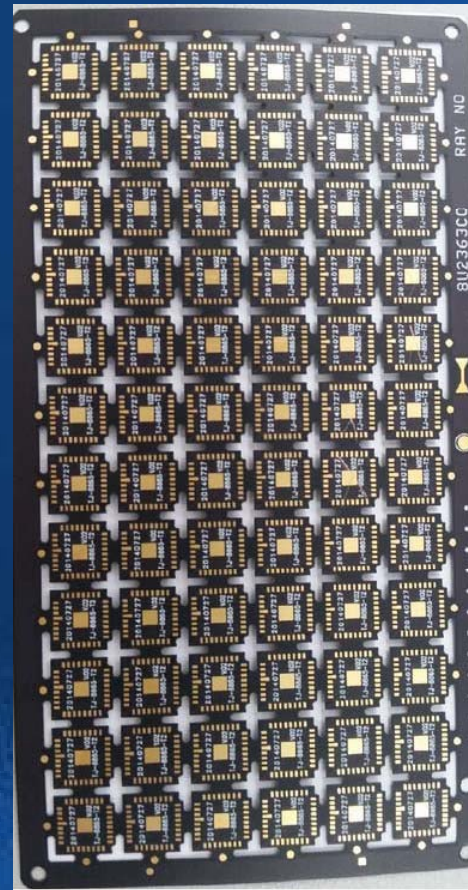


1L Flex sensor

- ◆ Kang Chen-TECH Some of our Production



4L Camera Module PCB



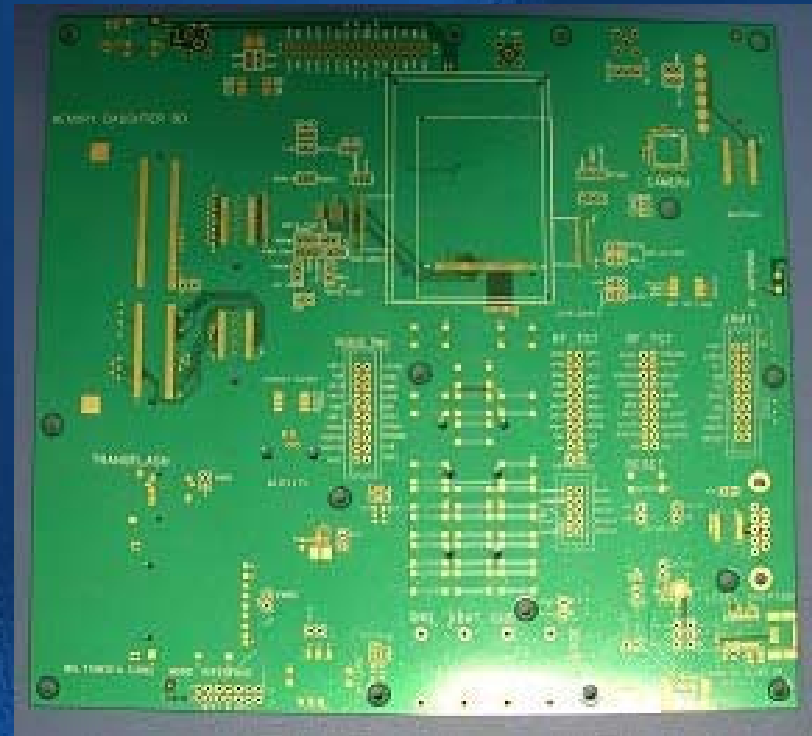
4L Camera PCB

BT meterail

- ◆ Kang Chen-TECH Some of our Production



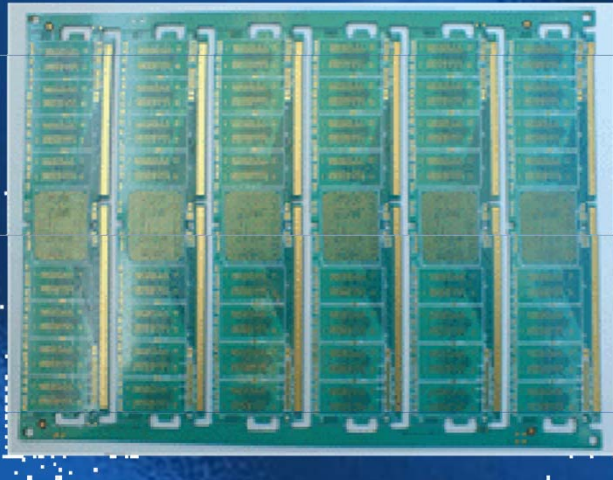
1+6+1 HDI INIG T0.9mm



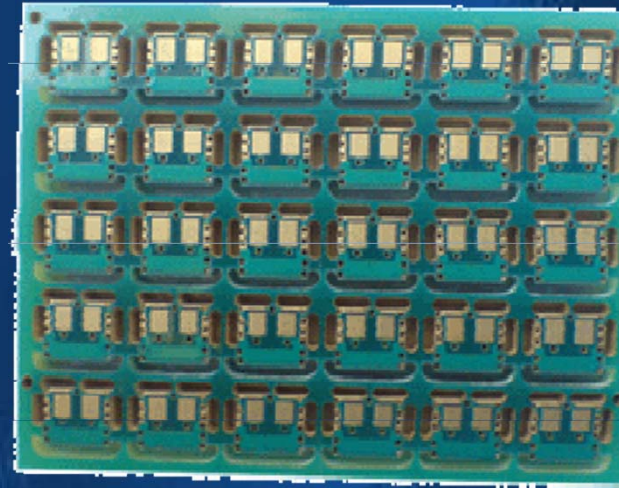
1+4+1 HDI  
(IC test board)



- ◆ Kang Chen-TECH Some of our Production



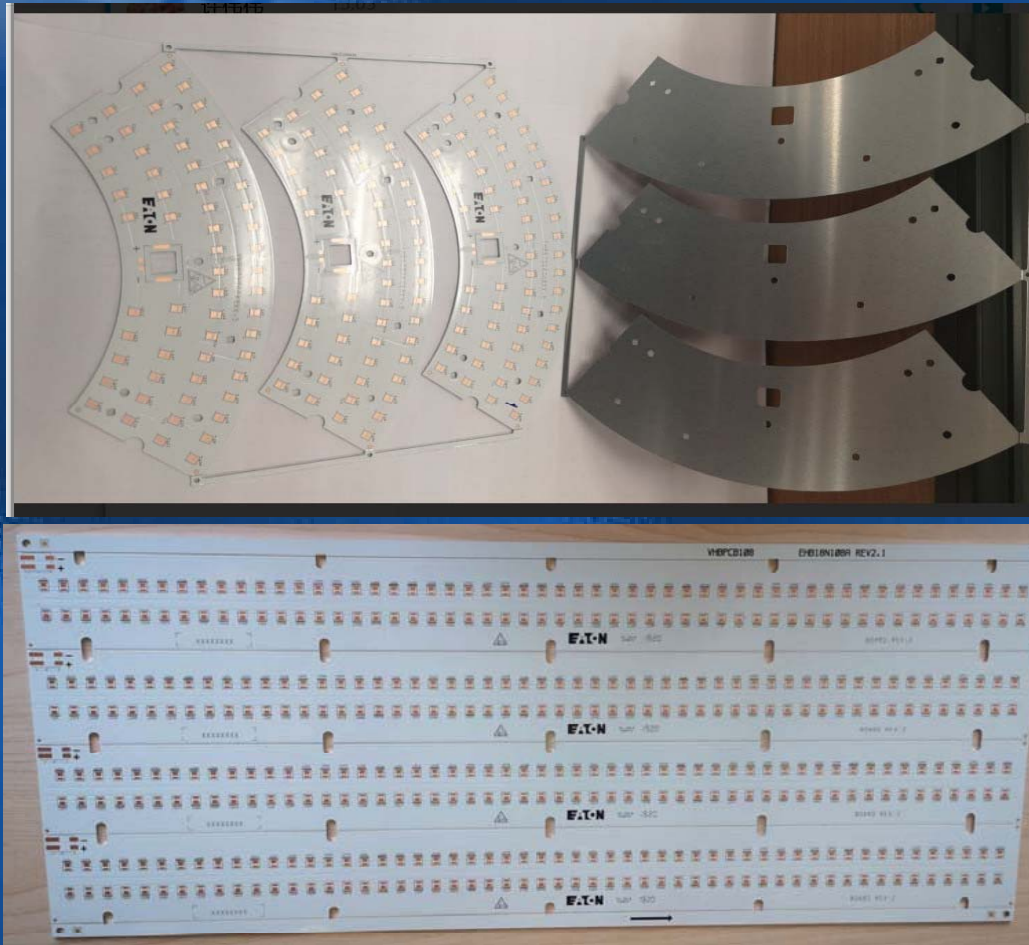
8L Memory Module



4mm thickness

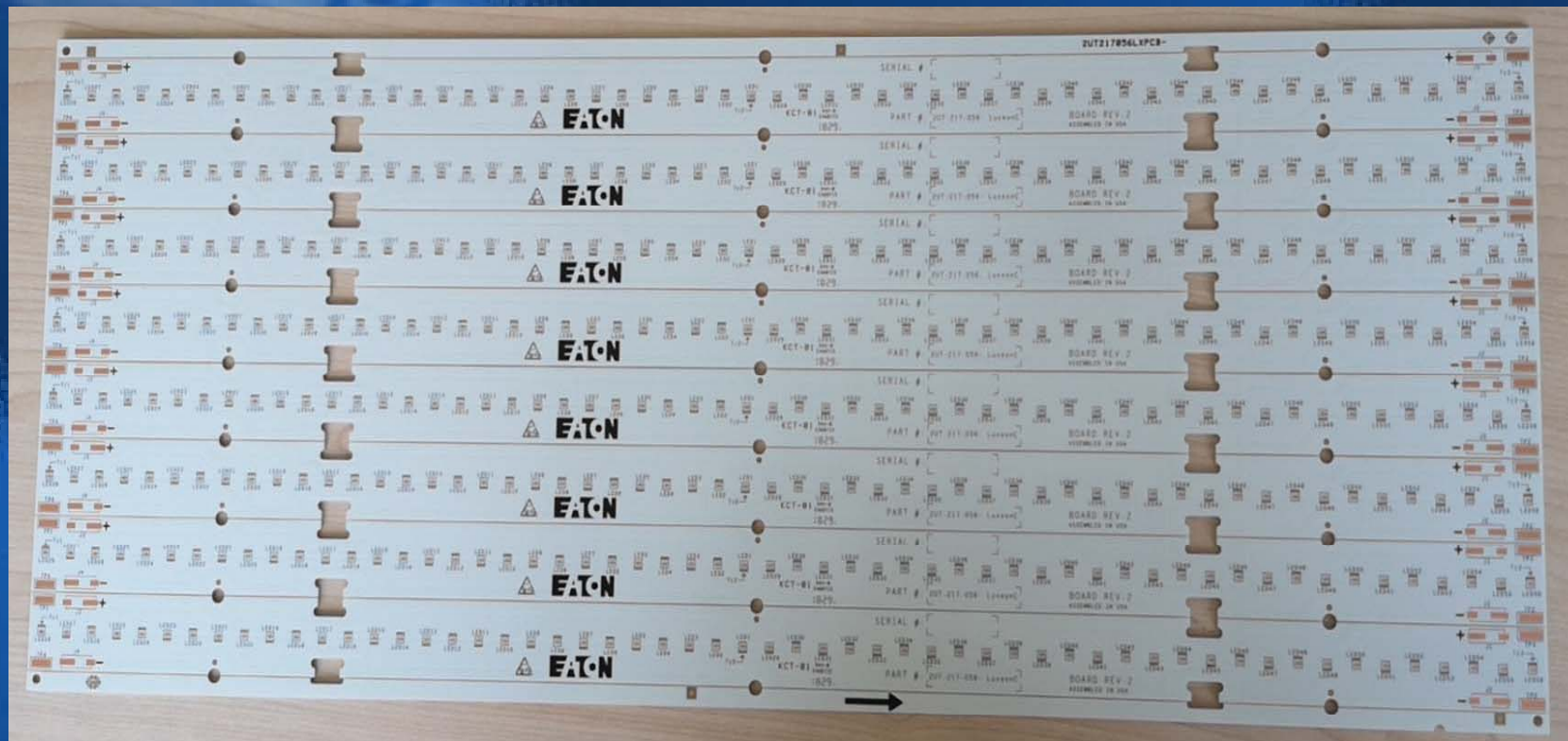


- ◆ Kang Chen-TECH Some of our Production



LED -Aluminum PCB—1 Layer

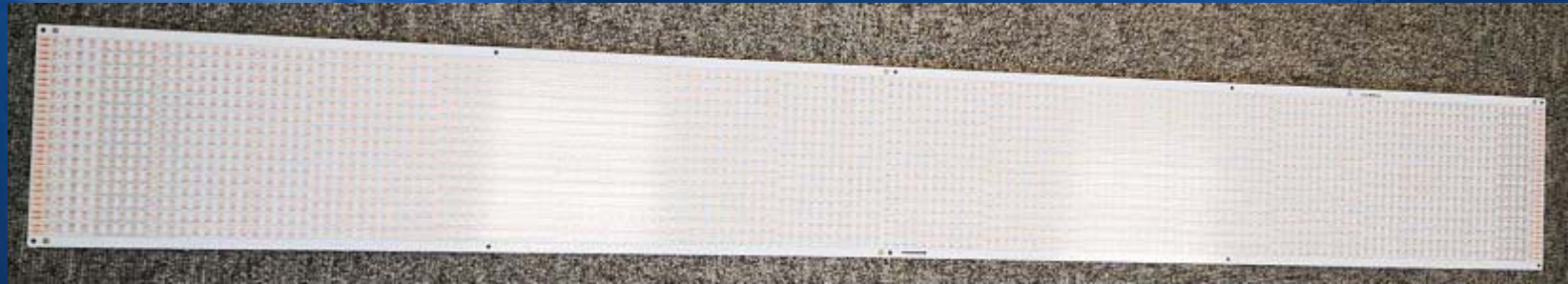
- ◆ Kang Chen-TECH cme of our Production



LED FR-4 PCB---1 layer



- ◆ Kang Chen-TECH Some of our Production



LED FR-4 PCB---2 layer 1200.9mm x 148.59 mm



LED FR-4 PCB---2 layer 1137.9mm x 215.9mm



- ◆ Kang Chen-TECH Some of our Production



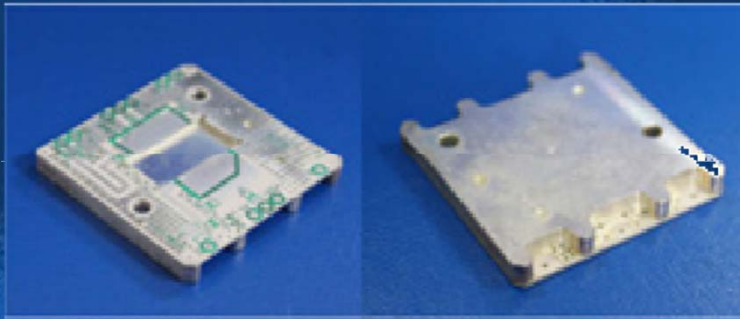


- ◆ Kang Chen-TECH Some of our Production

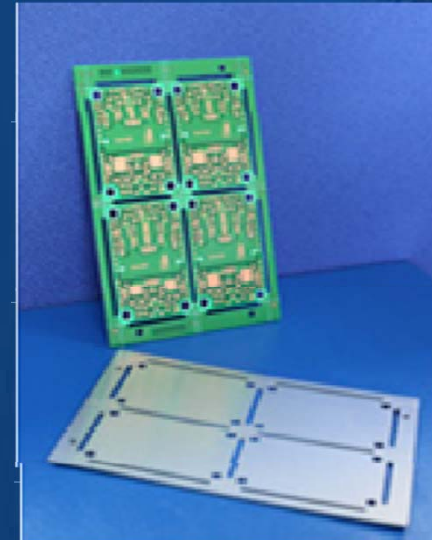


JIG

- ◆ KANG CHEN-TECH Some of our Production

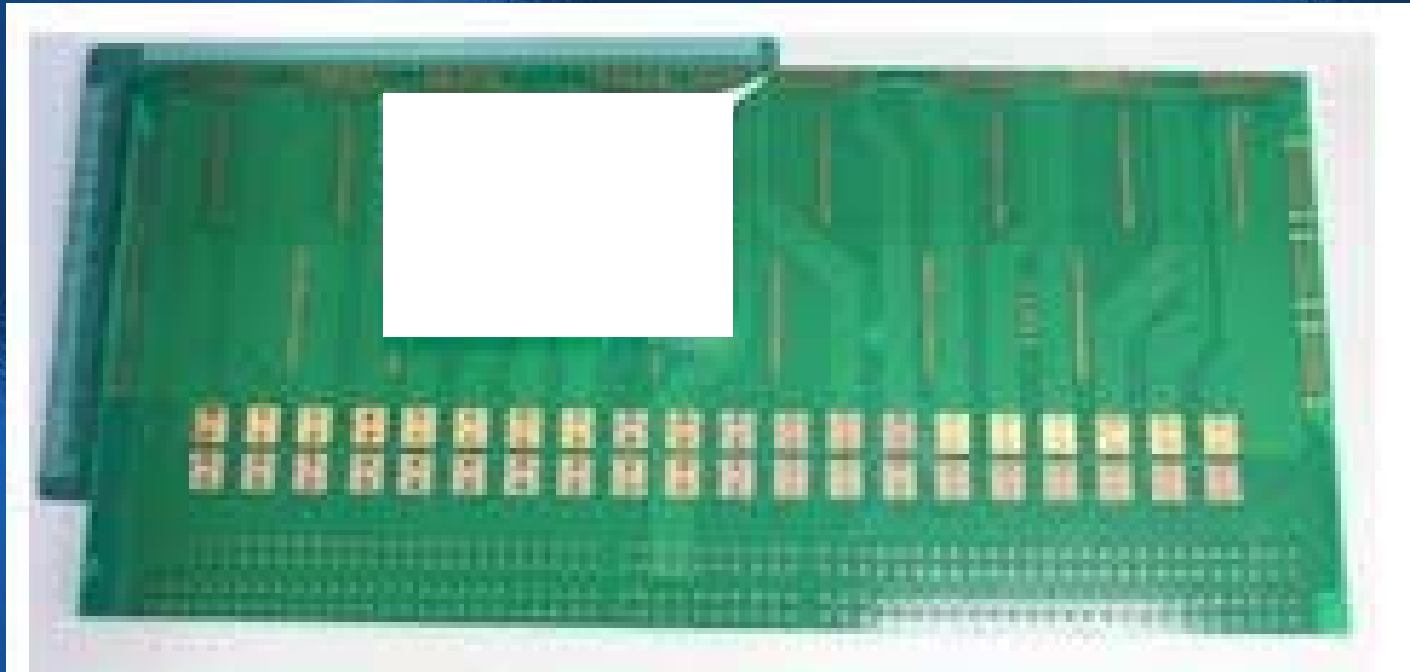


2L Rogers RF PCB 4mm



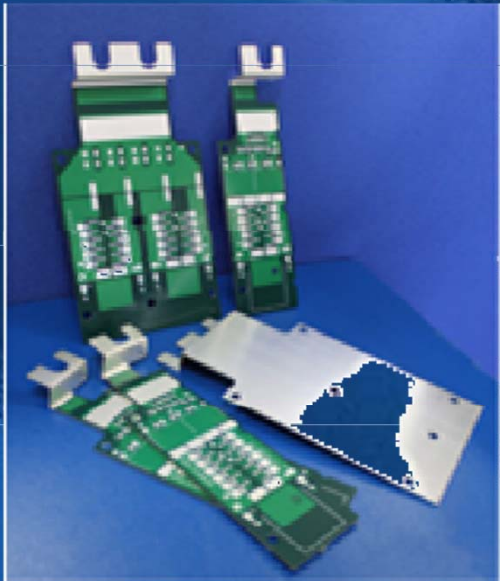
FR-4 2L PCB & 8mil  
Thermacon with

- ◆ Kang Chen-TECH Some of our Production

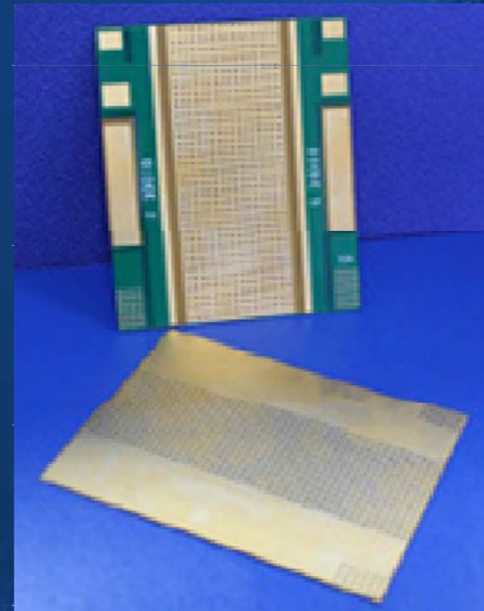


16L oversize PCB 350mm x 750mm

- ◆ Kang Chen-TECH Some of our Production



10oz Heavy Cu with  
1mm Cu base



Solar Battery PCB



- ◆ Kang Chen-TECH Some of our Production



16L Burn-in board

Thank you!